



Blank Page Splitter II

Revised 04-13-2010

Blank Page Splitter II

Blank Page Splitter from eDocFile, is a utility that is designed for post processing of tiff images. It is ideally suited for use with a copier that scans tiff images to a file folder on the user's network. The program will watch this folder and it's subfolders, when it finds a tiff image file it will silently open the file and move it to another file folder after it has split the document into separate files based upon the location of blank pages. It works with documents scanned in both simplex and duplex modes.

The simplex mode creates a new document every time a blank page is found. The duplex mode drops all blank pages and creates a new file when two consecutive blank pages are found. This allows a user to scan a mixture of simplex and duplex documents and have an output file with no blank pages.

The output file can be either a tiff image file or a PDF. A backup of the original image can also be saved in an archive folder.

System Requirements

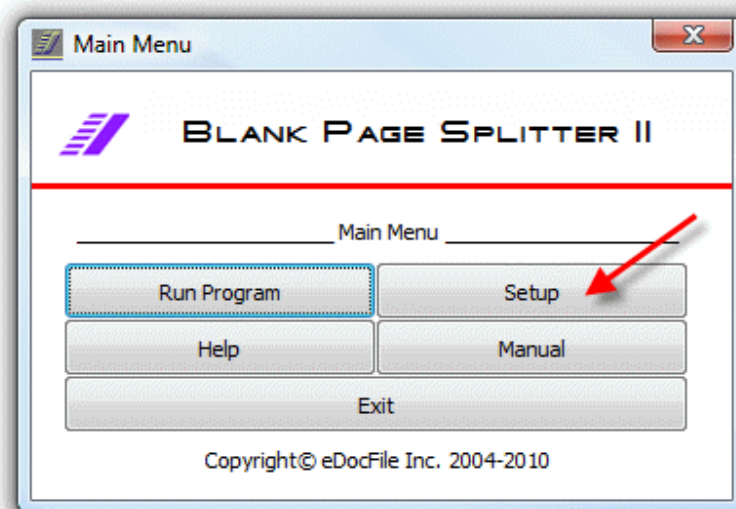
Windows 2000 or Later

A method of Acquiring Tiff Images - either a copier or a scanner

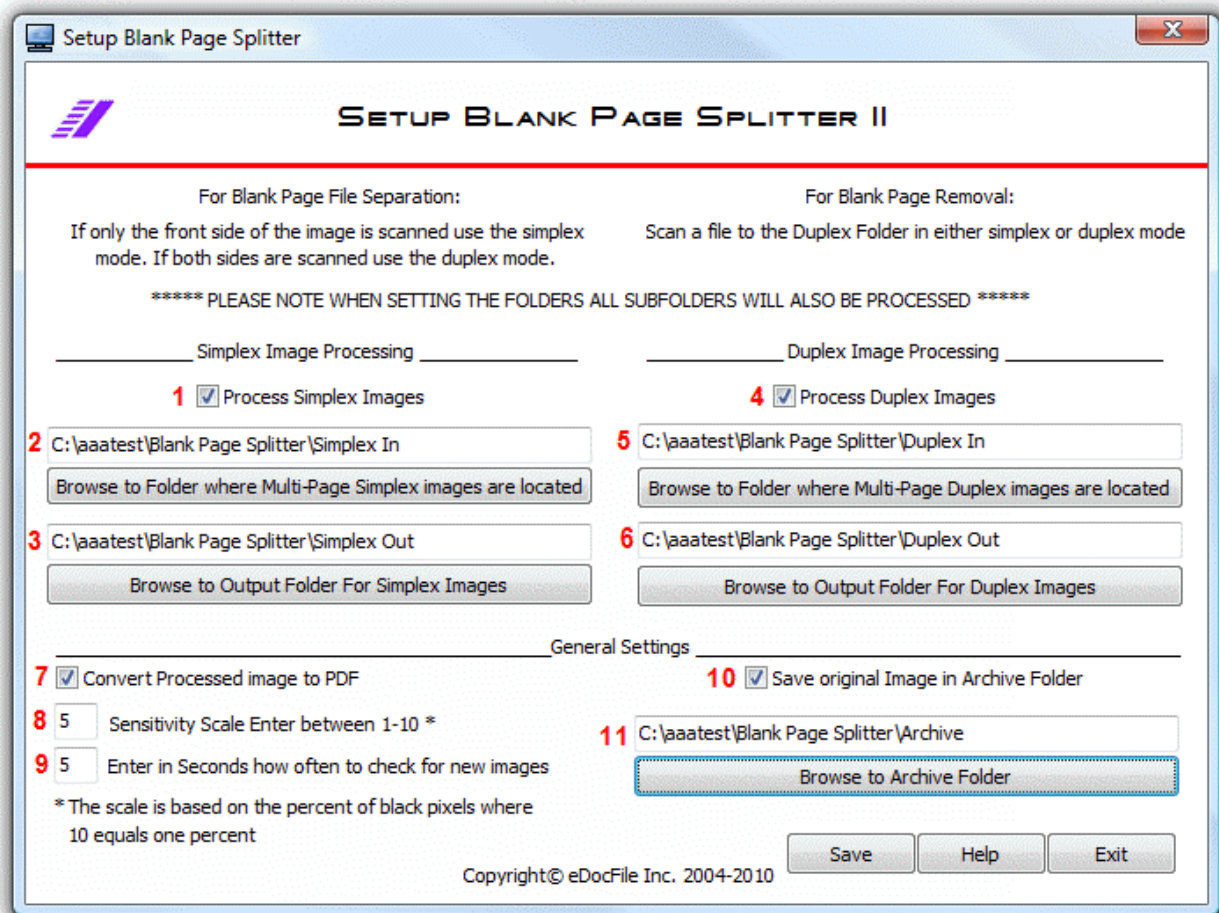
Adobe Acrobat or Reader to view output PDF's

Setup

Click on Setup



The Setup Menu will Open



To separate files that were scanned in a Simplex manner (only one side and each page needs to be saved) where the file needs to be split - Scan to the Simplex folder. Each time a blank page is found a new file will be created.

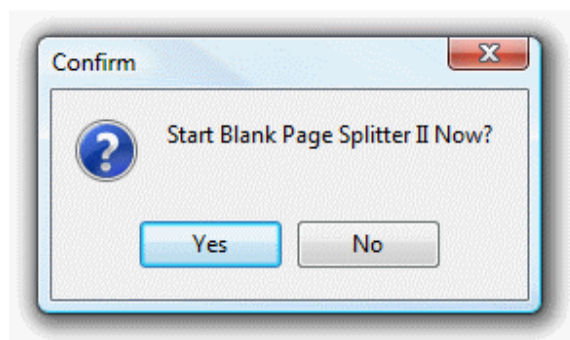
To separate files that contain mixed pages (in other words they were scanned in a duplex manner with some but maybe not all back sides need to be saved) scan to the duplex folder. Two consecutive blank pages must be found for a new file to be created and all blank pages will be dropped.

1. Place a check mark in "Process Simplex Images" to process the folder containing simplex images. If the incoming documents were scanned in a simplex mode, each time a blank page is found it will create a new document.
2. Browse to or enter the folder that will contain the incoming simplex tiff images from the copier.
3. Browse to or enter the folder that will contain processed simplex tiff images or PDFs.

4. Place a check mark here if the incoming documents were scanned in a duplex mode, each time two blank pages are found together a new file will be created. If only one blank page is found it will be eliminated,
5. Browse to or enter the folder that will contain the incoming duplex tiff images from the copier.
6. Browse to or enter the folder that will contain processed duplex tiff images or PDFs. (this can be the same folder as the output folder for processed simplex images.
7. Place a check mark in "Convert Processed Image to PDF" if the output desired is a PDF instead of a tiff image.
8. Place a check mark in "Monitor Function" to let the program run in the background and process images as they arrive. If left unchecked it will run once and then exit.
9. Enter a number for sensitivity. Usually this will be between 2 and 3. The scale relates to the percentage of black pixels on the page. Where 1 is 1/10 of one percent. Only testing on your own documents will allow this to be set correctly. An example for testing would be to type a 2 or three letter word on a page. And see when it is included or dropped.
10. Enter a time in seconds to check the folder for new images.
11. Place a check mark here to save a copy of the original file
12. Enter a path to store the original file if it is to be saved.

When finished click on Save to save the settings or Exit without saving.

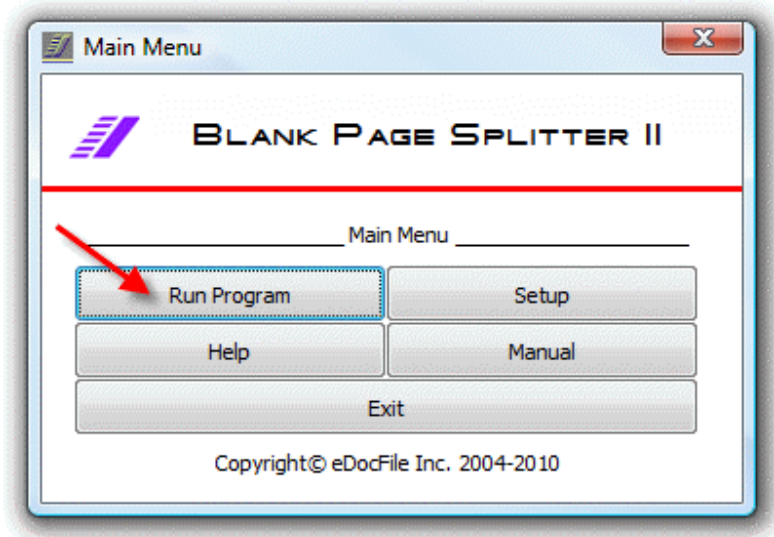
If Save is selected the user will be prompted to run the program.



Click on Yes to Start the Program or No to return to the Main Menu

Running the Program

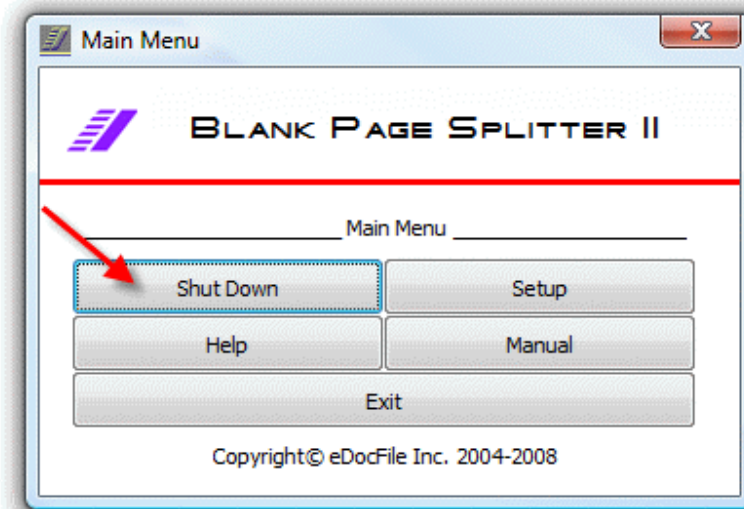
To run the program click on "Run Program".



A flashing Icon will appear in the Sys tray when the program is running.



To stop the program click on "Shut Down"



Loading the program for All Users

Although not an actual service the program can be loaded as one by running it from the command line.

Warnings:

The Trial version cannot be loaded as a service as it prompts the user to continue after each five files. The prompt will not display when run as a service. Instead the program will just stop, leading the user to believe that it has failed.

If running the program as a service the Main Menu should not be opened or the settings changed.

To run it as a service begin by entering the desired settings in "Setup" and save them upon exiting. To change the settings later it must be removed from loading as a Service.

The command line to activate the program is "C:\Program Files\edocfile\Blank Page Splitter II\BlankPageSplitter2.exe". To make it easier to load the program as a service when the program was installed there was a folder created called "C:\Program Files\edocfile\Blank Page Splitter II\Services". In this folder there is a program called "Launcher Service for Windows 2000/XP" which also has worked correctly with Vista and Windows Seven. The license agreement should be read and agreed to before using this program. The file "Readme.txt" contains instruction on how to run the program. To simplify the process, browse to "C:\Program Files\edocfile\Blank Page Splitter II\Services\Services\Install Service.bat" and run it to load the program as a service and "C:\Program Files\edocfile\Blank Page Splitter II\Services\Uninstall Service.bat" to remove it from starting as a service.

If running it as a service it maybe wise to remove the shortcuts to the Main Menu to stop users from attempting to change the settings.

Support

For assistance with either the trial version or full version of Blank Page Splitter please contact us at:

eDocfile Inc.
2709 Willow Oaks Drive
Valrico, FL 33594
Phone 813-413-5599
sales@edocfile.com